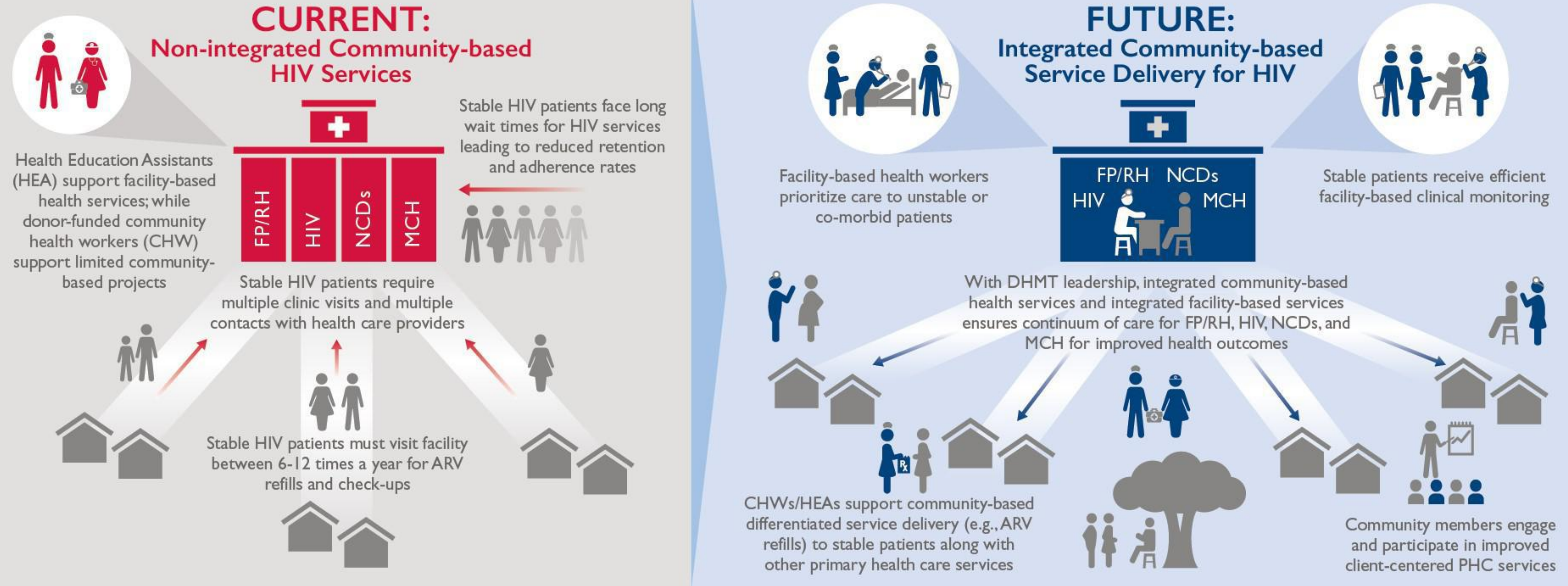


# Back to Basics

## HRH2030's contribution to integrating HIV into Botswana's return to community-based care



### HRH2030 MILESTONES



Supporting national uptake of differentiated service delivery models of care through a DHMT-led process utilizing integrated health consisting of facility-based health workers, members of community health committees, patient representatives, community health workers, and non-governmental organizations.



Supporting development of national integrated community-based service delivery guidelines and aligned HRH frameworks for community-based health work, including task sharing of HIV primary care with CHWs/HEAs.



Supporting DHMTs to leverage health partnerships with NGOs/CBOs in implementation for sustainable low-cost community service delivery models through increased supervision and improved data transparency/increased evidence.



Bolstering the ability of service providers to apply practical QI approaches to adapt and innovate around community-based HIV care and other services (e.g., community medication refill).