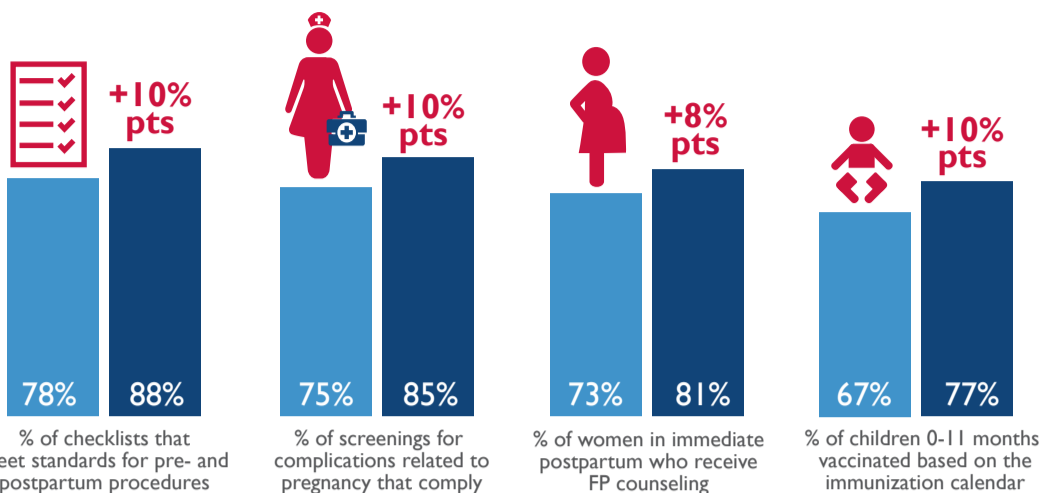


HRH2030 Year 4 Achievements

ACCESSIBLE

In Mali, by **improving provider engagement at community health centers and referral health centers**, HRH2030 has made quality maternal, newborn, and child health and family planning care more accessible to rural communities.*



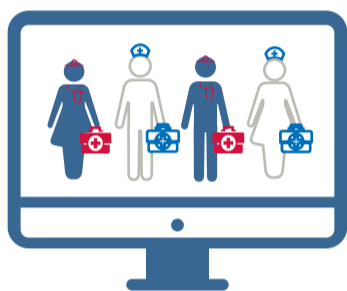
*Numbers show change from Q2, 2019 to Q4, 2019

ACCOUNTABLE

In Senegal, by enhancing the functionality of the HRH information system, HRH2030 **increased the Ministry of Health's use of HRH data for decision-making** for rational deployment and transfer of health workers.



Conducted **25** trainings on HRH data collection & use



Trained District HRH Focal Points use data to identify gaps in health worker staffing



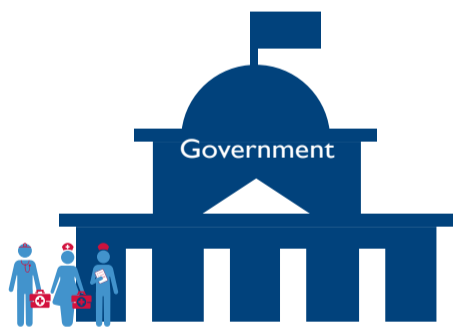
Gaps are filled at the facility level, improving service delivery

AFFORDABLE

In Malawi, in coordination with the recruitment authority, HRH2030 transitioned **293 PEPFAR-supported health workers** to the Government of Malawi payroll, advancing the country's commitment **to allocate domestic funding to ensure adequate distribution of its workforce to meet priority needs** and ensure quality HIV/AIDS services.



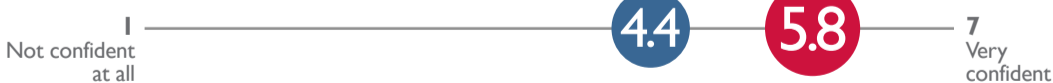
Successful transition



RELIABLE

In Burundi, Cameroon, Niger, and Sierra Leone, HRH2030 Capacity Building for Malaria (CBM) **strengthened the National Malaria Control Programs (NMCP)'s capacity to implement high quality malaria control interventions** by helping NMCP staff gain confidence in their leadership and management skills and abilities.

- Average level of confidence **before** CBM support.
- Average level of confidence **after 1 year** of CBM support.



HRH2030 allowed me to acquire leadership techniques, understand the analysis and decision-making process, and learn to share knowledge to boost the performance of the team.



HRH2030's support was a valuable contribution to the situation analysis, identification of challenges, the development of action plans, and strategies to strengthen employee motivation.



HRH2030 was of great support to us. The working climate has improved, including time management and emergency forecasting. The staff was galvanized and encouraged.